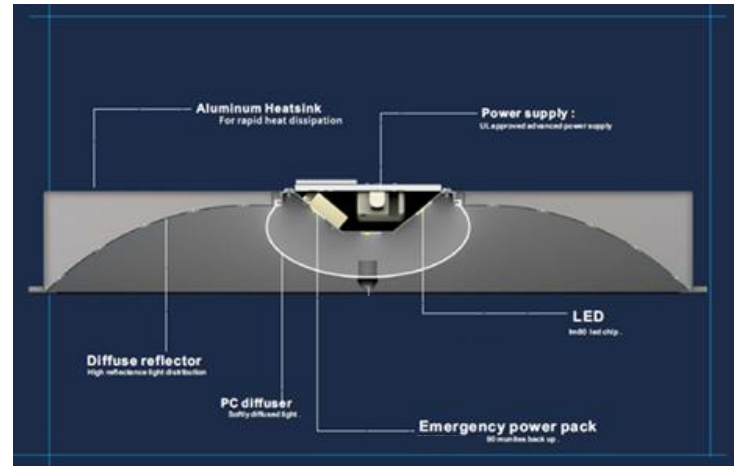


# LED Troffer

Troffer fixtures for general interior lighting applications. Ideal for commercial buildings, hotels, offices, hospitals, retail stores, plazas, etc.

- Major Power Savings - Compared to fluorescent tubes, more than 50% less power usage dramatically reduces energy costs
- Lower Maintenance - Lasts 50,000 hours resulting in lower costs by reducing re-lamp frequency, especially in difficult to reach areas

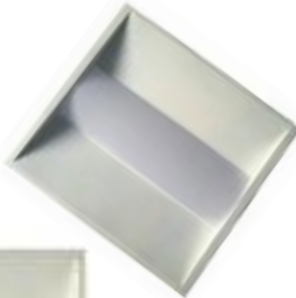
With a fully dimmable driver (0-10V dimming protocol) and a wide range of lumen output levels and light color selections, we have the solution to fit any application.



## ◆ FEATURES

- Reduce energy consumption and operating costs by 80% or more
- Maintenance free operation - lasts up to 10 to 20 times longer than conventional lighting
- No UV or IR and no RF interference
- Optional lighting controls (motion and light sensors) and emergency backup battery provide protection and conserve energy
- Environmentally friendly - fully recyclable, no mercury or other hazardous material

**>50,000 Hour Life Rating**  
**5 Year Warranty**



for more information email [info@emium.com](mailto:info@emium.com)

or call 224.735.3435 | [www.emium.com](http://www.emium.com)

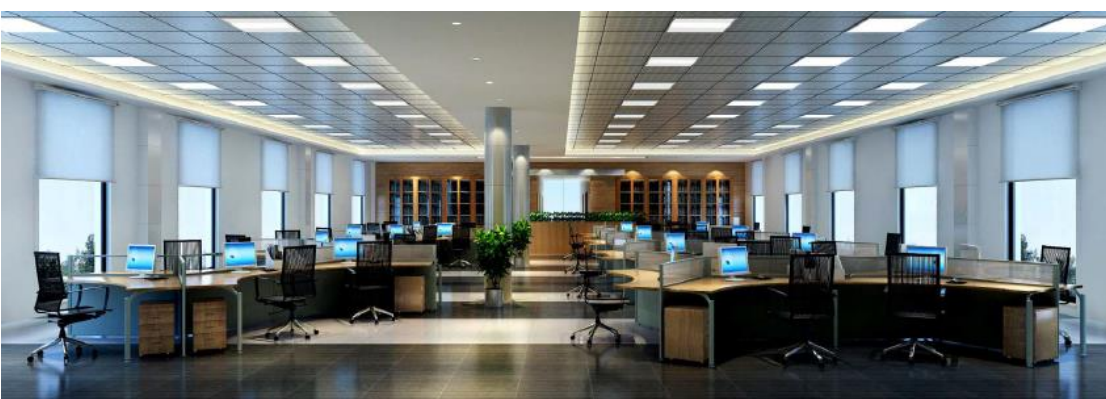


**emium**

*emium lighting, see differently*

## SPECIFICATIONS

| Model #          | EL-ZY-TR-2X2-25W-XXXX-DM | EL-ZY-TR-2X2-36W-XXXX-DM | EL-ZY-TR-2X4-36W-XXXX-DM | EL-ZY-TR-2X4-50W-XXXX-DM |
|------------------|--------------------------|--------------------------|--------------------------|--------------------------|
| Troffer Size     | 2' x 2'                  |                          | 2' x 4'                  |                          |
| Power            | 25W                      | 36W                      | 36W                      | 50W                      |
| Lumen Output     | 3375                     | 4860                     | 4860                     | 6750                     |
| Beam Angle       | 160°                     |                          |                          |                          |
| Input Voltage    | 100-277VAC               |                          |                          |                          |
| Color            | 3000K 3500K 4000K 5000K  |                          |                          |                          |
| CRI              | >80                      |                          |                          |                          |
| Housing Material | Aluminum and PMMA        |                          |                          |                          |
| Dimmable         | Yes (0-10 volt)          |                          |                          |                          |
| Life rating      | >50,000 hrs              |                          |                          |                          |
| Warranty         | 5 years                  |                          |                          |                          |



for more information email [info@emium.com](mailto:info@emium.com)  
 or call 224.735.3435 | [www.emium.com](http://www.emium.com)



**emium**

*emium lighting, see differently*