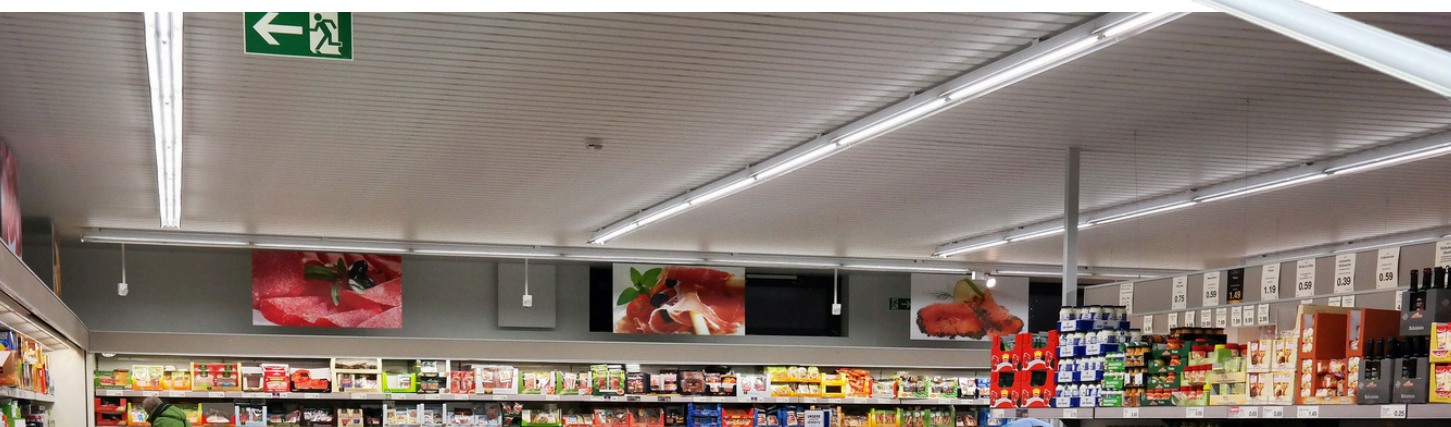


LED T8 Tube

Specialty Series



WHY UPGRADE WITH EMIUM'S LED T8 SPECIALTY TUBE LIGHTS?

Major power savings compared to fluorescent tubes. Up to 70% less power usage dramatically reduces energy costs.

High shock & vibration resistant body. With polycarbonate lens that eliminates any hazard of glass tube breakage or the additional expense of light robbing plastic tube guards.

FEATURES

- Estimated 50,000 hour LED lifespan.
- No infrared rays, no ultraviolet radiation, no thermal effect.
- Ultra slim and various dimensions are available.
- Soft and wide light emitting.
- Available with rotatable ends for more directional applications.
- Compatible with most existing HO fixtures.

Recommended Use:

- Homes
- Offices
- Restaurants
- Hotels
- Retail Stores

LED T8 Tube

Specialty Series

46"



20 watts

Aluminum + PC

- 120-277VAC
- 130lm/W
- 5000K
- R17d Rotatable End Type - *Standard*
- Type B - *Two end input*

EX: EL-MN-T84F20W50K-R17dRT

70"



30 watts

Aluminum + PC

- 100-277VAC
- 130lm/W
- 5000K
- R17d Rotatable End Type - *Standard*
- Type B - *Two end input*

EX: EL-ZY-T8-30W1800 BINX 5K R17dRT

