

There is a Better Way

# LED Linear Fixture

Batten Series



## WHY UPGRADE WITH EMIUM'S LED LINEAR BATTEN LIGHTS?

Emium's LED linear batten fixtures offer a cost-effective, energy-efficient lighting crossover solution. Combining aesthetic appeal, quality, and professional level performance for a wide variety of environments and applications.

Our slim profile battens allow for uniform and spot free illumination throughout various rooms and applications.

Select variations have linkable capabilities that allow you to connect up-to 14 2ft fixtures together. Our 4ft units allows linking up-to 6 units.

## FEATURES

- Reduces energy consumption and operating costs by 70% or more.
- Maintenance free operation - lasts up to 20 times longer than conventional lighting
- IP54 Rating
- Estimated 50,000-hour LED lifespan.
- Can be series linked or installed independently for stand-alone applications.

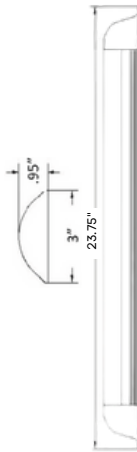
### Recommended Use:

- Parking Garages
- Factories
- Warehouses
- Retail Stores

There is a Better Way

# LED Linear Fixture

Batten Series



20W



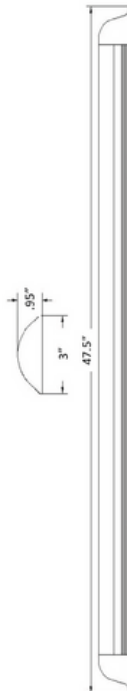
## 20 Watts

- 100-277VAC
- 114lm/W
- 4000K or 5000K
- Linkable - *Able to link up to 14 Fixtures*

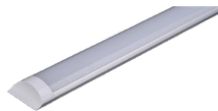
### Mounting

- Surface - *Standard*
- Suspension - *Optional*

EL-MC-BA-01-20W-4K-L



40W



## 40 Watts

- 100-277VAC
- 120lm/W
- 4000K or 5000K
- Linkable - *Standard*  
*(Able to link up to 6 Fixtures)*

### Options

- Non-Linkable

### Mounting

- Surface - *Standard*
- Suspension - *Optional*

EL-MC-BA-01-40W-5K

