



◆ FEATURES

- Available in 6", 8" and 10" models
- Available in 18, 27, 40 and 54 watts
- 100-277VAC input voltage
- 0-10V dimming
- Damp rated
- 40° beam angle
- Commercial grade solid state technology provides 10 times longer life than traditional technology



Solid State Lighting Interior Architectural LED Downlights

Easy conversion method and installation can be performed from below the ceiling without removing existing fixture.

This Emium LED downlight is ideal for medium to smaller retail stores, corporate and municipal common areas, hotels, restaurants, hospitals and clinics, entertainment venues, and other similar public and commercial spaces.

Emium carries a complete line of products to meet all types of commercial and residential needs. Our products are engineered to install easily making them very cost-effective. Simple, standard installation for either new construction or retrofit applications.

Available in a variety of sizes, lumen output levels, and color temperatures to suit any application.

50,000 hrs rated life
5 Year Warranty





for more information email info@emium.com

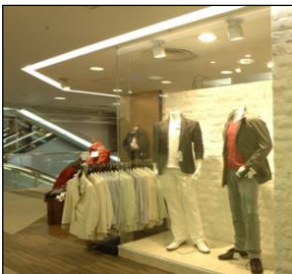
or call 224.735.3435 | www.emium.com

**emium***emium lighting, see differently*

SPECIFICATIONS

Components	Light Engine				Trim Size	Bracket Size
Photo						
Model	EL-OKT-ADL-(X)W-xx-DM				EL-OKT-ADL(X)TRM	EL-ADLBR-(X)
					6" (8.64"H x 7.48" outside dia.) *	6"
Power (watts)	18	27	40	54	8" (8.98"H x 9.29" outside dia.) (54w - 9.76"H x 9.29" outside dia.)	8"
Lumen Output	1600	2300	3350	4500	10" (9.25"H x 10.98" outside dia.) (54w - 10.00"H x 10.98" outside dia.)	10"
Beam Angle	40°					
Housing	Aluminum, Reflector Cup					
Input Voltage	AC 100-277V					
Color Temp	Warm white 3000K, 3500K, Natural white 4000K Daylight white 5000K (30, 35, 40, 50)					
CRI	> 82Ra					
Dimmable	Yes (0-10V)					
Rated Life	More than 50,000 hrs					
Certifications	UL, FCC, Energy Star					

* 6" trim will not accommodate the 54 watt engine


emium
emium lighting, see differently

 for more information email info@emium.com

 or call 224.735.3435 | www.emium.com