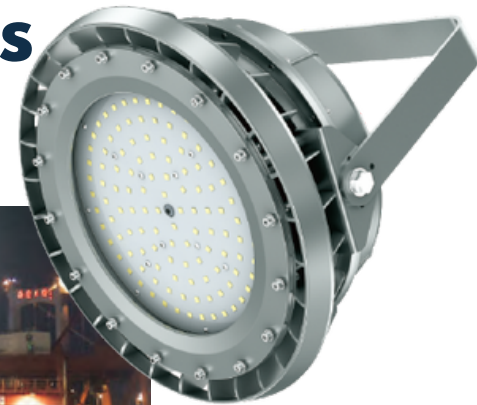


There is a Better Way

# LED Hazardous Location Lights

B Series



## WHY UPGRADE WITH EMIUM'S LED HAZARDOUS LOCATION LIGHTS?

Emium LED Hazardous Location Light Fixtures provide cutting edge LED lighting and maximum safety to suit any hazardous environments you may have.

These units boast high performance, security, and energy savings at a competitive cost. Making the switch from old and dated hazardous environment lights to Emium Lighting products, is not only sensible, but necessary to maintain the safety of your operation.

## FEATURES

- Glass lens or polycarbonate lens for making different beam angles.
- Marine rating powder coated finish treatment.
- Estimated 50,000 hour LED lifespan
- Low temperature applications to  $-40^{\circ}\text{C}$  ( $-40^{\circ}\text{F}$ ) and high temperature up to  $55^{\circ}\text{C}$  ( $131^{\circ}\text{F}$ ).
- Heavy-duty and high impact resistance.
- High-quality SMT LED and Meanwell driver.
- ETL, UL844, Class I Division 2

## Recommended Use:

- Rail Yards
- Oil Rigs
- Manufacturing Plants

# LED Hazardous Location Lights

## B Series



**60 watts**

- 100-277VAC
- 135lm/W
- 5000K

**Housing**

- Silver - Standard

EL-HZ-60WBN-50-120-TR



**80 watts**

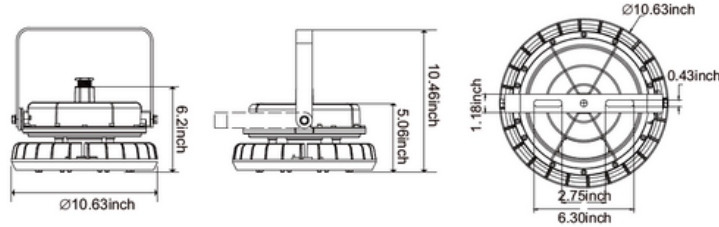
- 100-277VAC
- 135lm/W
- 5000K

**Housing**

- Silver - Standard

EL-HZ-80WBN-50-120-TR

### 60/80W Dimensions:



**100 watts**

- 100-277VAC
- 135lm/W
- 5000K

**Housing**

- Silver - Standard

EL-HZ-100WBN-50-120-TR



**150 watts**

- 100-277VAC
- 135lm/W
- 5000K

**Housing**

- Silver - Standard

EL-HZ-150WBN-50-120-TR



**200 watts**

- 100-277VAC
- 135lm/W
- 5000K

**Housing**

- Silver - Standard

EL-HZ-200WBN-50-120-TR

### 100/150/200W Dimensions:

