



emium™

emium lighting, see differently

INTERIOR LIGHTING



Linear LED Fixtures

5 Year Full Product Warranty
50,000 hrs rated life

Emium linear LED fixtures offer a cost-effective, energy-efficient lighting crossover solution that combines aesthetic appeal, quality, and professional level performance for a wide variety of environments and applications.

Ideal for commercial environments demanding high visibility, factory and warehouse work stations, and retail drug and grocery store isles.

The waterproof "TP" version is an excellent replacement for fluorescent vapor tight fixtures. Their IP65 rating make them impervious to the elements (water, dust, insects, etc.). Can be use in virtually any environment.

Emium carries a complete line of products to meet all types of commercial needs. Our products are engineered to install very simply and make the transition from HID or fluorescent lighting very cost-effective.

FEATURES

Available in two housing design configurations, Tri-proof and Batten

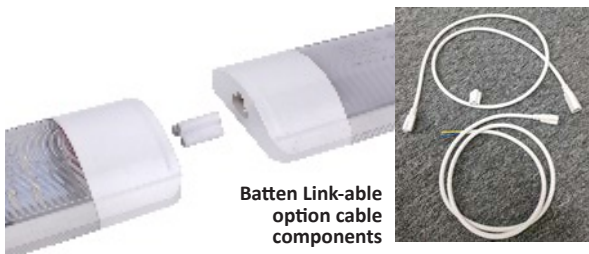
Can be series linked or installed independently for stand-alone applications

Exceptional illumination in a small utilitarian package

TP Version rated IP65 waterproof

Reduce energy consumption and operating costs by 70% or more.

Maintenance free operation - lasts 10x longer than conventional lighting



Batten Link-able option cable components



for more information email info@emium.com or call 224.735.3435 | www.emium.com

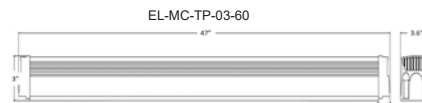
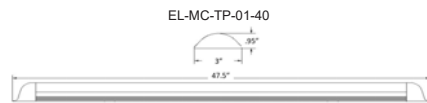
INTERIOR LIGHTING

Ordering Guide: Linear LED Fixture: Example: EL-MC-BA-01-20W-50K

Fixture Type	Housing	Wattage	CCT (X,X00) Kelvin	NOTE:
EL-MC				EL-MC-TP options available include 0-10V dimming, Micro-wave Motion Sensor, Emergency back-up module.
EL-MC Linear LED Series	BA-01 Batten TP-03 Tri-proof	20 20W 30 30W 40 40W 60 60W	35K 3500K 40K 4000K 50K 5000K	

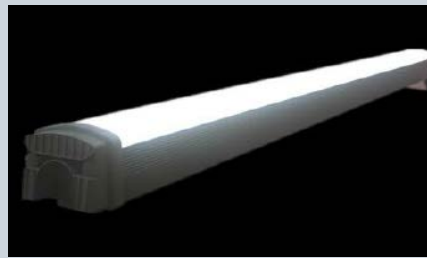
SPECIFICATIONS

Model	EL-MC-BA-01-20	EL-MC-BA-01-40	EL-MC-TP-03-30	EL-MC-TP-03-60
Length	2'	4'	2'	4'
Power Consumption	20W	40W	30W	60W
Lumen Output	2,800	5,600	3,200	6,300
Waterproof Rating	IP54		IP65	
Control Options	N/A		Dimmable, Micro-wave Motion Sensor, Emergency back-up module.	
Input Voltage	100 - 277VAC			
Mounting Options	Surface, T-Grid, Suspended, Cove			
Color Temp	3500K 4000K 5000K		4000K 5000K	
CRI	> 82			
Link-ability	Specify linkable or non-link for flush to junction box installations		Yes, standard (Not intended for flush to j-box installations)	
Rated Life	More than 50,000 hrs.			



EL-MC-BA-01-40

Able to link up to 14, 2 ft. fixtures, and up to 6, 4 ft. fixtures end to end.



EL-MC-TP-03-60

Able to link up to 10, 4 ft. fixtures, and up to 20, 2 ft. fixtures end to end.

